



**BETTER**  
Homes & Developments



We take your dream  
and help make it a reality

## HUNTINGDALE 289

Contemporary Façade

To find out more  
about this property  
**Bobbi Jones: 0414 350 873**  
(02) 6584 7752

### KEY FEATURES

- ✓ Designed for a block that slopes down from street level with the home offering a 4th bedroom and Ensuite adjoining a third living with direct access to the backyard.
- ✓ The main level of this home includes two separate and very spacious living zones with a centrally located galley kitchen and butlers style pantry.
- ✓ The large under roof deck provides a space that will be enjoyed year round.
- ✓ The master suite includes generous walk in robe and Ensuite.
- ✓ This executive size home promotes modern family living.



4



3



2

**A:** Suite 1 No 2 Murray Street, Port Macquarie NSW 2444  
**P:** (02) 6584 7752  
**E:** sales@betterhomes.com.au

[betterhomes.com.au](http://betterhomes.com.au)

© Better Homes

# HUNTINGDALE 289



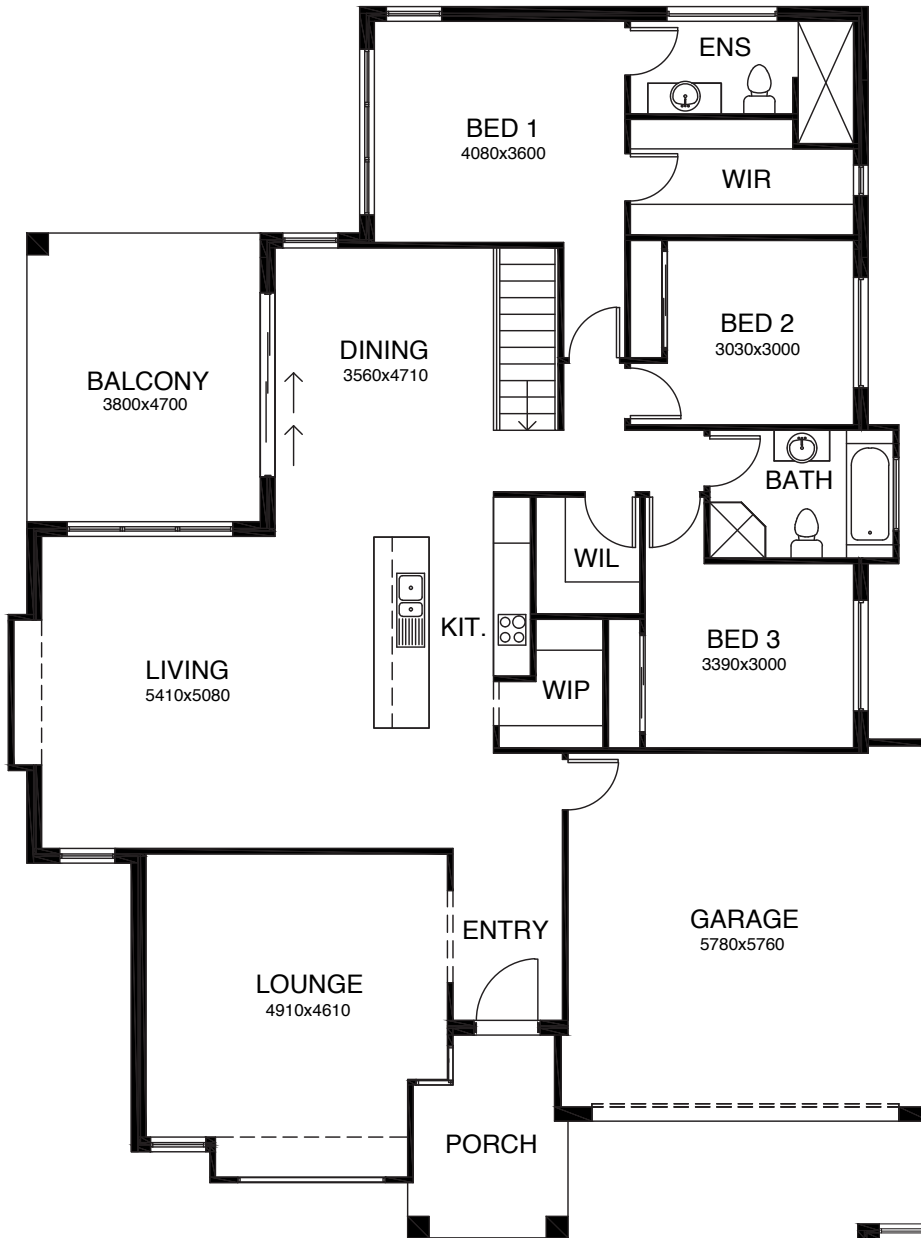
4



3



2



## UPPER FLOOR

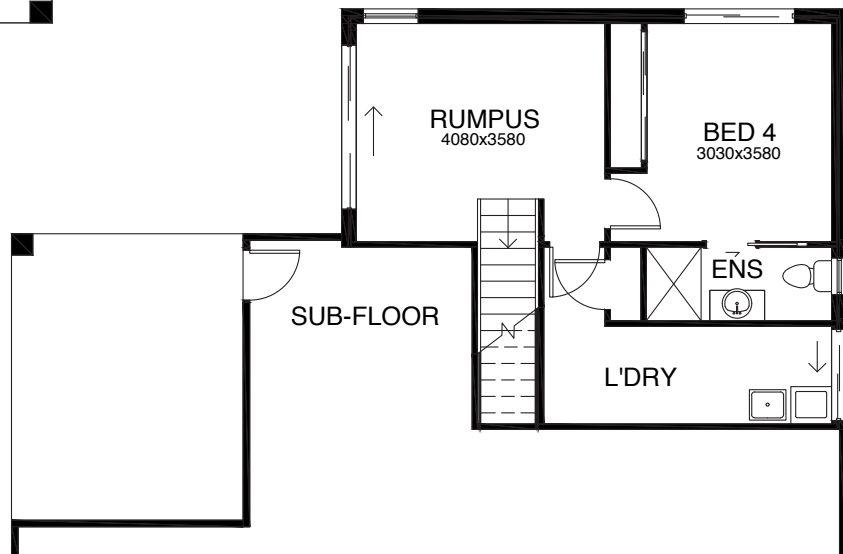
## FLOOR PLAN DIMENSIONS

Length: 19.55m

Width: 15.0m

Total Size: 286.2m<sup>2</sup>

## LOWER FLOOR



To find out more about this property  
**Bobbi Jones: 0414 350 873**  
(02) 6584 7752

[betterhomes.com.au](http://betterhomes.com.au)

© Better Homes